

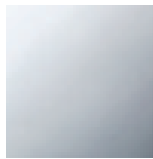


## Sink - MEM

Single-lever lavatory mixer - polished chrome

Article number: 29 210 782-00 0010

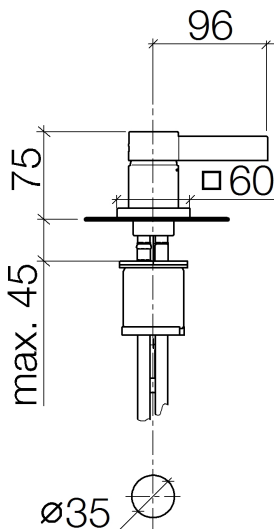
- 1-3/8" hole diameter
- Flange 2-3/8" x 2-3/8"
- 2x 3/8" US flexible supply lines
- inlet: 2 x pressure hose with 3/8" compression fitting
- (ADA)
- NOTE: Local building codes may require the use of an anti-scald device. Please refer to remote pressure balance valve (35 910 970 90)



polished chrome

Discontinued items available to order until 31.12.9999

## Dimensional drawing

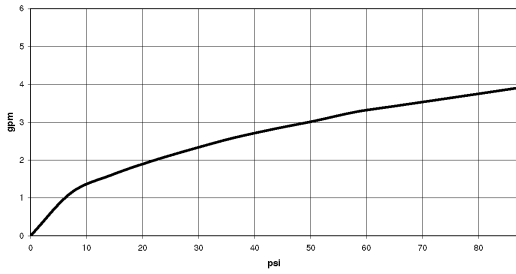


All dimensions in mm / inch = mm x 0,0394



Sink - MEM  
Single-lever lavatory mixer - polished chrome  
Article number: 29 210 782-00 0010

### Flow rate chart





## Sink - MEM

Single-lever lavatory mixer - polished chrome

Article number: 29 210 782-00 0010

### Other surface finishes



platinum matte

29 210 782-06 0010



platinum

29 210 782-08 0010



Brushed Durabrass

29 210 782-28 0010

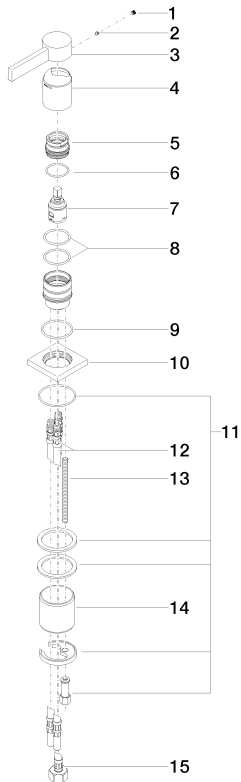


Dark Platinum matte

29 210 782-99 0010

More custom finish options are available via special production (xTra Service). Please see our finish matrix for availability and pricing or contact a Dornbracht representative.

### Spare parts list



Number	Item Number	Designation	Number of units
1	09 31 20 109 90	plug	1
2	09 31 11 063 90	pin	1
3	09 20 78 057-00	handle	1
4	09 11 02 289-00	cover	1
5	09 24 04 288 90	nut	1
6	09 14 10 137 90	seal	1
7	90 15 05 042 00 90	cartridge	1
8	09 14 10 192 90	seal	2
9	09 14 10 067 90	seal	1
10	09 27 78 040-00	rosette	1
11	04 30 11 038 02 90	fixing set	1
12	04 30 04 045 00 90	Flexible supply line Short shaft 3/8" -	2
13	09 31 11 012 90	pin	1
14	09 18 40 079 90	sleeve	1
15	04 30 04 019 00 90	hose	1